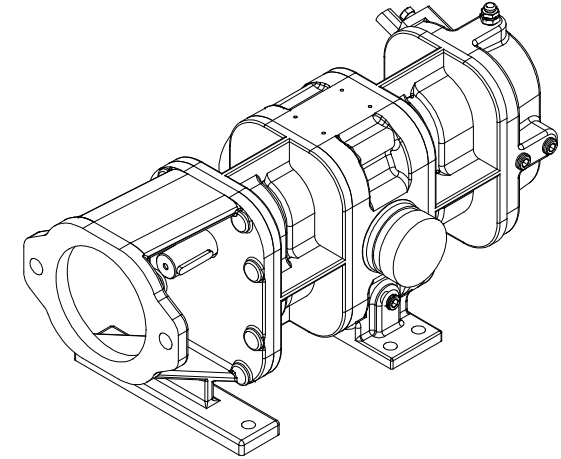
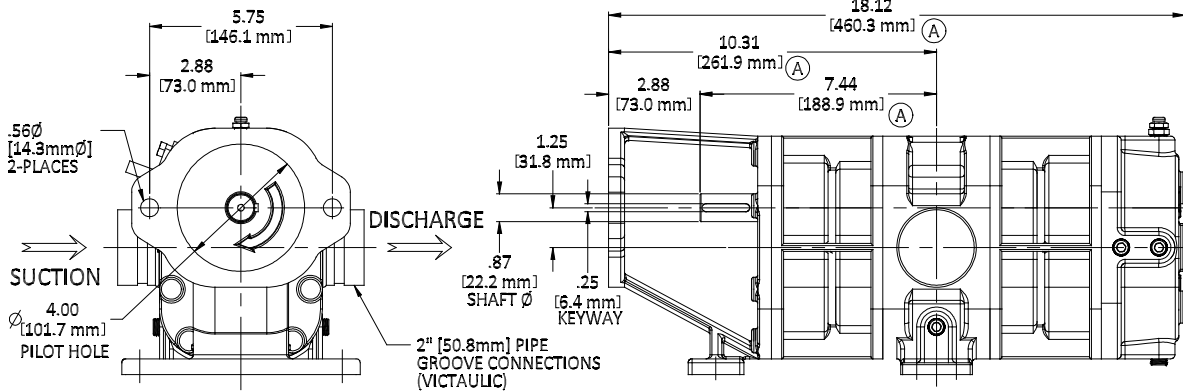


HYDRAULIC MOTOR MOUNT BORED TO ACCEPT STANDARD SAE "B", 2-BOLT HYDRAULIC MOTOR

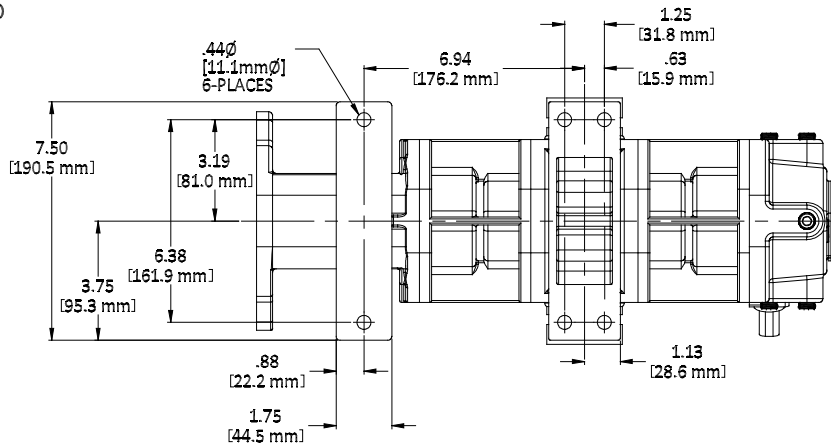
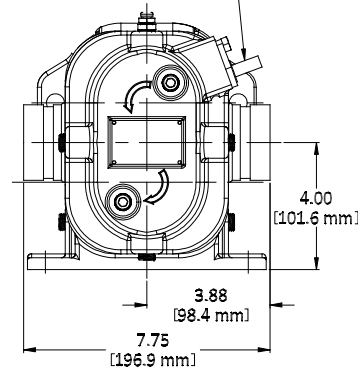
SHOWN WITH OPTIONAL SPEED SENSOR FOR MEASURING PUMP SPEED. PORT IS PLUGGED IF SPEED SENSOR IS NOT SPECIFIED.



REVISIONS				
REV.	DESCRIPTION	DATE	DWN. BY	APPRV'D.
A	BODY LENGTH INCREASED	06-12-2017	SMT	MS



SHOWN AS STANDARD RIGHT-HAND (CW) SHAFT ROTATION



ASSEMBLED PUMP WEIGHT: 85 LBS [39 KG]

GP60 FOAM PUMP with HYDRAULIC MOTOR BRACKET			
MODEL NUMBER	PART NUMBER	SHAFT ROTATION	SHAFT POSITION
GP60H-T	31.021.0	STANDARD (RH - CW)	TOP (UPPER)
GP60H-RT	31.021.10	REVERSE (LH - CCW)	TOP (UPPER)

<p>EMERGENCY PRODUCTS, LLC</p>	OUTLINE ASSEMBLY		
	<small>REPORT ERRORS & CHANGES REMOVE ALL SHARP EDGES UNLESS OTHERWISE SPECIFIED ALL DIMENSIONS ARE IN INCHES</small>		
<small>COPYRIGHT © DRAWING NOT TO BE REPRODUCED OR USED TO MAKE OTHER DRAWINGS OR MACHINERY</small> <small>DRAWN BY SMT CHECKED BY MS</small>	<small>STANDARD TOLERANCES:</small> <small>DECIMALS .XX ± .030 .XXX ± .015</small> <small>ANGLES ± 1/2°</small>	DWG. NO. 31.021.xx	REV. A
<small>SCALE: NONE</small>	<small>SHEET 1 OF 1</small>		<small>DATE: 09-29-2016</small>