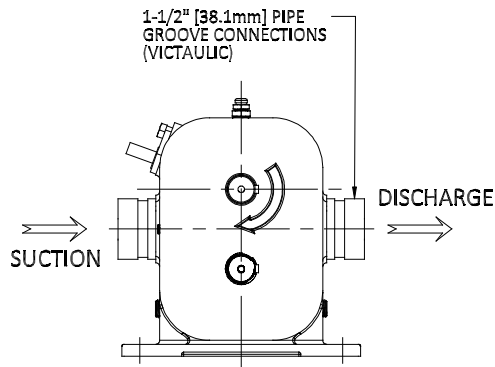
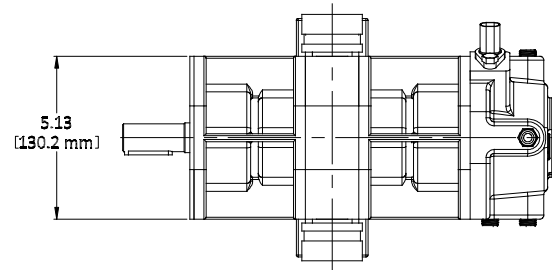


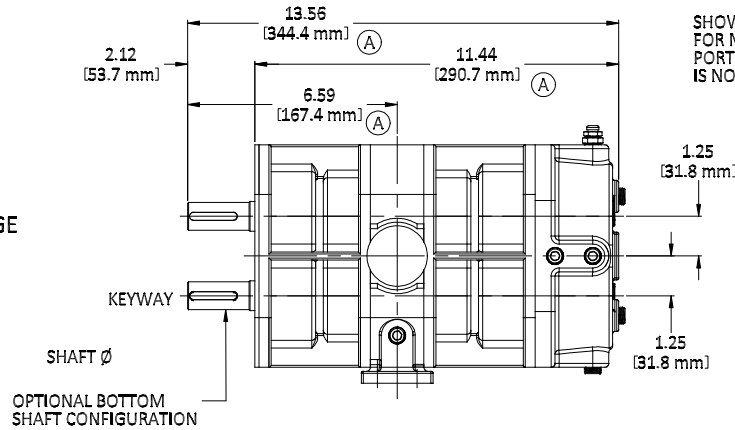
REVISIONS

REV.	DESCRIPTION	DATE	DWN. BY	APPR'VD.
A	BODY LENGTH INCREASED	06-09-2017	SMT	MS

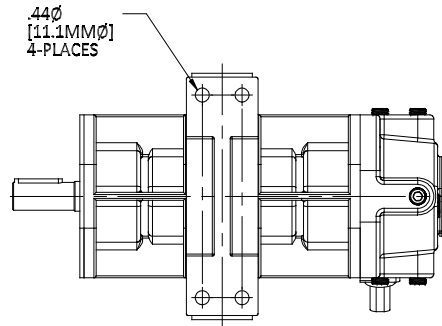


1-1/2" [38.1mm] PIPE GROOVE CONNECTIONS (VICTAULIC)

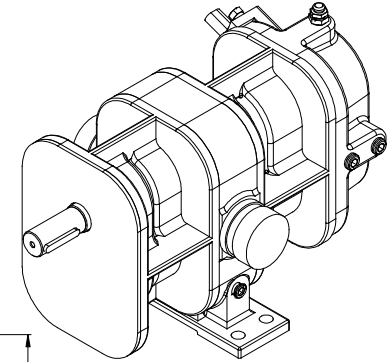
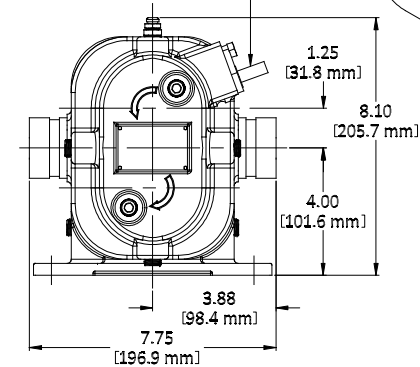
SHOWN AS STANDARD RIGHT-HAND (CW) SHAFT ROTATION (UPPER SHAFT)



OPTIONAL BOTTOM SHAFT CONFIGURATION



SHOWN WITH OPTIONAL SPEED SENSOR FOR MEASURING PUMP SPEED. PORT IS PLUGGED IF SPEED SENSOR IS NOT SPECIFIED.



ASSEMBLED PUMP WEIGHT: 60 LBS [27 KG]

GP30 FOAM PUMP with UNIVERSAL DRIVE CONFIGURATION			
MODEL NUMBER	PART NUMBER	SHAFT ROTATION	SHAFT POSITION
GP30U-T	31.018.2	STANDARD (RH - CW)	TOP (UPPER)
GP30U-RT	31.018.12	REVERSE (LH - CCW)	TOP (UPPER)
GP30U-B	31.018.4	STANDARD (LH - CCW)	BOTTOM (LOWER)
GP30U-RB	31.018.14	REVERSE (RH - CW)	BOTTOM (LOWER)



OUTLINE ASSEMBLY

REPORT ERRORS & CHANGES REMOVE ALL SHARP EDGES UNLESS OTHERWISE SPECIFIED ALL DIMENSIONS ARE IN INCHES

STANDARD TOLERANCES: .XX ± .030 .XXX ± .015

DECIMALS .XX ± .030 .XXX ± .015

ANGLES ± 1/2°

COPYRIGHT © DRAWING NOT TO BE REPRODUCED OR USED TO MAKE OTHER DRAWINGS OR MACHINERY		SIZE B	DWG. NO. 31.018.xx	REV. A
DRAWN BY SMT	DATE: 09-27-2016	SCALE: NONE	SHEET 1 OF 1	
CHECKED BY MS				