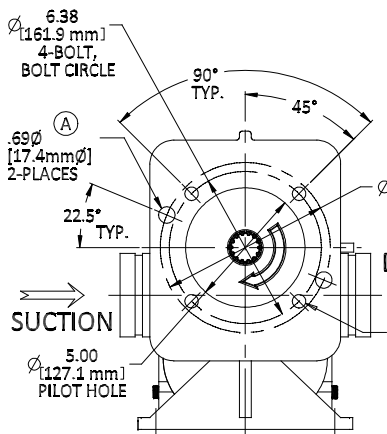
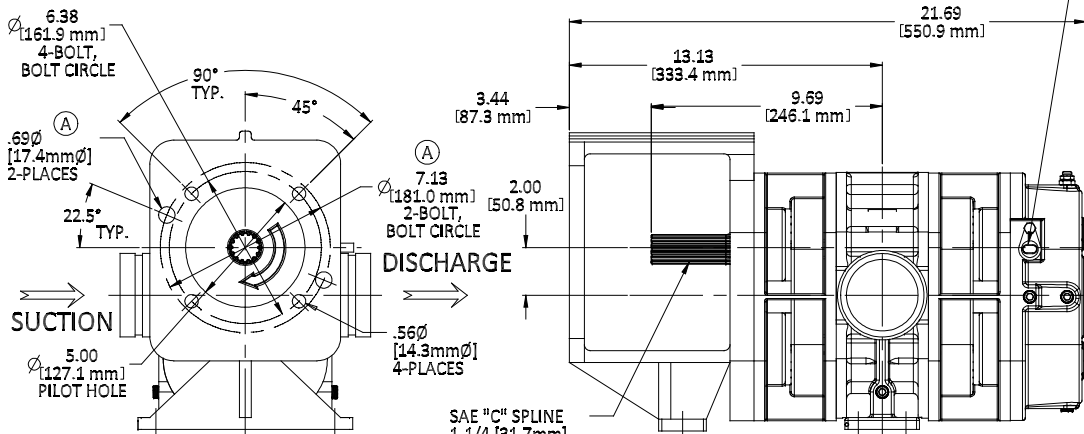


REVISIONS				
REV.	DESCRIPTION	DATE	DWN. BY	APPRV'D.
A	REVISED PER HYD. BRACKET	06-21-2017	SMT	MS

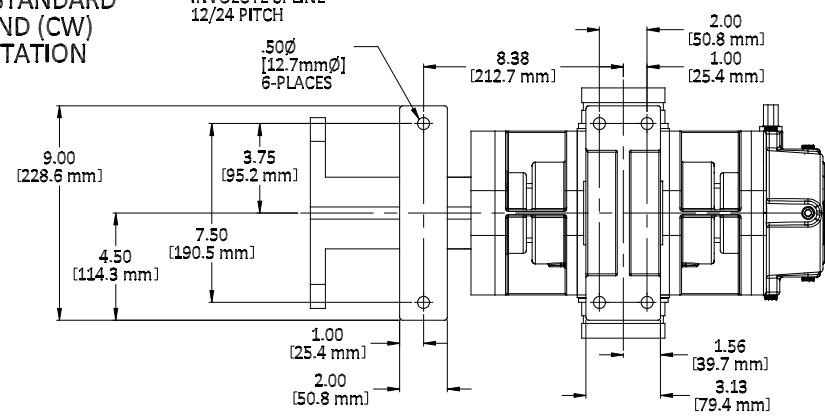
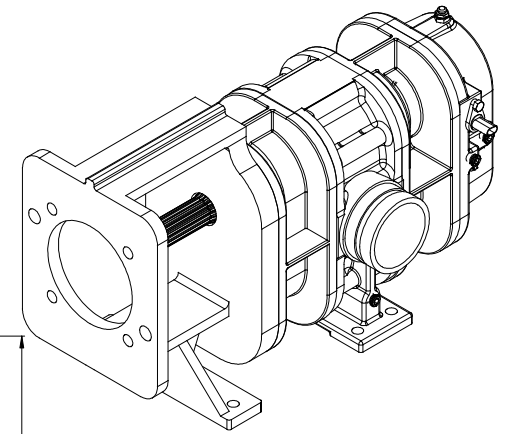
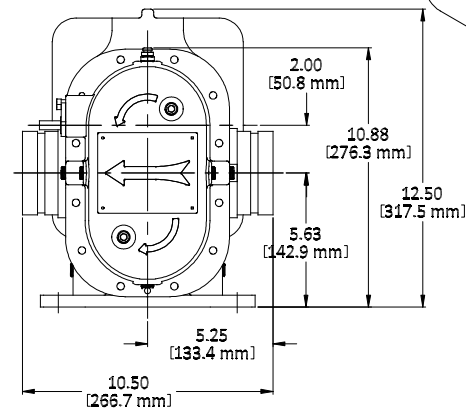
(A) HYDRAULIC MOTOR MOUNT BORED TO ACCEPT STANDARD SAE "C", 2-BOLT & 4-BOLT HYDRAULIC MOTORS



SHOWN AS STANDARD RIGHT-HAND (CW) SHAFT ROTATION



SHOWN WITH OPTIONAL SPEED SENSOR FOR MEASURING PUMP SPEED. PORT IS PLUGGED IF SENSOR IS NOT SPECIFIED.



ASSEMBLED PUMP WEIGHT: 200 LBS [90 KG]

GP200 FOAM PUMP with HYDRAULIC MOTOR BRACKET - SAE "C"			
MODEL NUMBER	PART NUMBER	SHAFT ROTATION	SHAFT POSITION
GP200H-T	31.016.0	STANDARD (RH - CW)	TOP (UPPER)
GP200H-RT	31.016.10	REVERSE (LH - CCW)	TOP (UPPER)

EMERGENCY PRODUCTS, LLC

OUTLINE ASSEMBLY

UNLESS OTHERWISE SPECIFIED ALL DIMENSIONS ARE IN INCHES [mm]

STANDARD TOLERANCES: .XX ± .030 .XXX ± .015

DECIMALS .XX ± .030 .XXX ± .015

ANGLES ± 1/2°

COPYRIGHT © DRAWING NOT TO BE REPRODUCED OR USED TO MAKE OTHER DRAWINGS OR MACHINERY DRAWN BY: SMT CHECKED BY: MS	DATE: 10-13-2016	SIZE B SCALE: NONE	DWG. NO. 31.016.xx REV. A
--	------------------	-----------------------	-------------------------------------

SHEET 1 OF 1