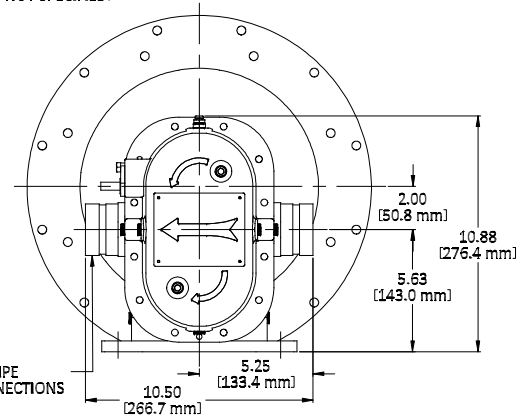


SHOWN WITH OPTIONAL SPEED SENSOR FOR MEASURING PUMP SPEED. PORT IS PLUGGED IF SPEED SENSOR IS NOT SPECIFIED.



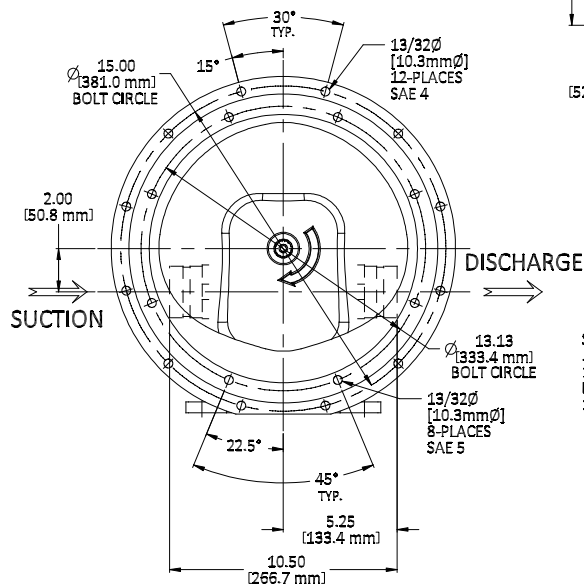
ASSEMBLED PUMP WEIGHT: 185 LBS [84 KG]

GP120 FOAM PUMP with SAE BELL HOUSING MOUNT

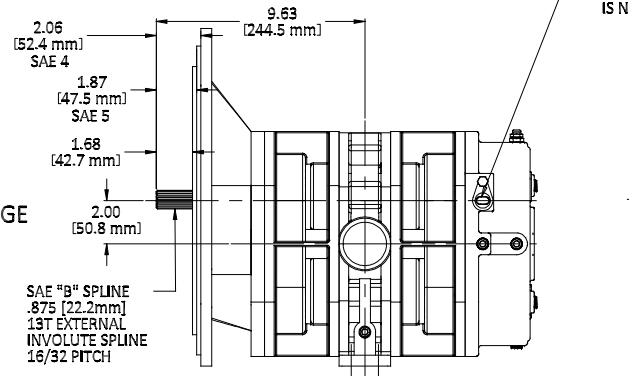
| MODEL NUMBER | PART NUMBER | SHAFT ROTATION     | SHAFT POSITION |
|--------------|-------------|--------------------|----------------|
| GP120M-T     | 31.017.3    | STANDARD (RH - CW) | TOP (UPPER)    |
| GP120M-RT    | 31.017.13   | REVERSE (LH - CCW) | TOP (UPPER)    |

|   |  |        |                           |                                 |
|---|--|--------|---------------------------|---------------------------------|
| <p>EMERGENCY PRODUCTS, LLC</p>  | <b>OUTLINE ASSEMBLY</b>                                      |        |                           |                                 |
|   | UNLESS OTHERWISE SPECIFIED ALL DIMENSIONS ARE IN INCHES (mm) |        | STANDARD TOLERANCES:      | DECIMALS .XX ± .030 .XXX ± .015 |
| COPYRIGHT ©<br>DRAWING NOT TO BE REPRODUCED OR USED TO MAKE OTHER DRAWINGS OR MACHINERY<br>DRAWN BY: SMT<br>CHECKED BY: MIS<br>DATE: 10-04-2016 |  | SIZE B | DWG. NO. <b>31.017.xx</b> | REV.                            |
| SCALE: NONE   |  |        |                           | SHEET 1 OF 1                    |

SAE BELL HOUSING MOTOR MOUNT  
SAE #4 AND SAE #5 BOLT HOLE PATTERNS



SHOWN AS STANDARD  
RIGHT-HAND (CW)  
SHAFT ROTATION



SAE "B" SPLINE  
.875 [22.2mm]  
13T EXTERNAL  
INVOLUTE SPLINE  
16/32 PITCH

2" [50.8mm] PIPE  
GROOVE CONNECTIONS  
(VICTAULIC)

