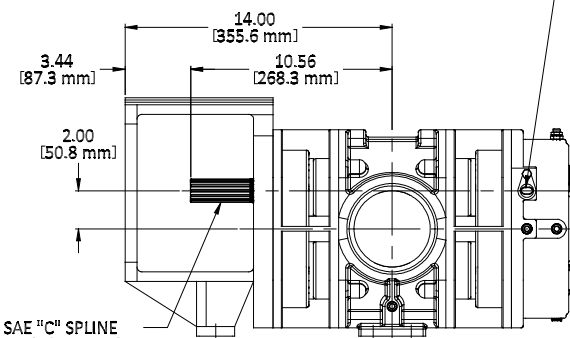
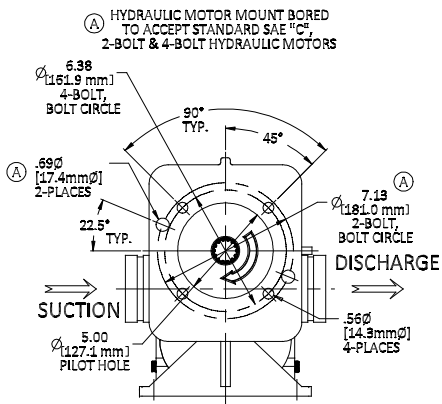
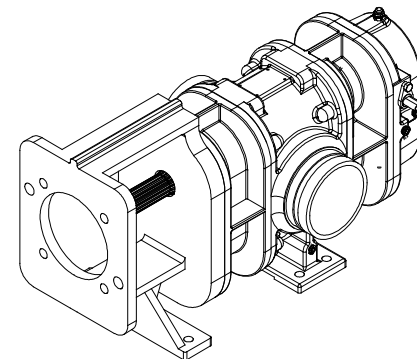
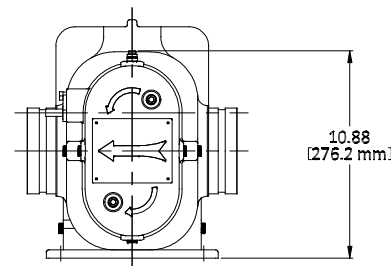


4" [101.6mm] PIPE GROOVE CONNECTIONS (VICTAULIC)

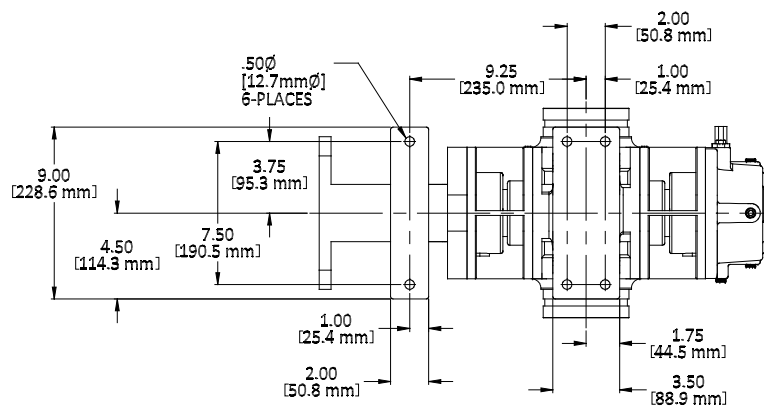


SHOWN WITH OPTIONAL SPEED SENSOR FOR MEASURING PUMP SPEED. PORT IS PLUGGED IF SPEED SENSOR IS NOT SPECIFIED.

SAE "C" SPLINE 1-1/4 [31.7mm] 14T EXTERNAL INVOLUTE SPLINE 12/24 PITCH



HYDRAULIC MOTOR MOUNT BORED TO ACCEPT STANDARD SAE "C", 2-BOLT & 4-BOLT HYDRAULIC MOTORS



ASSEMBLED PUMP WEIGHT: 220 LBS [100 KG]

GP300 FOAM PUMP with HYDRAULIC MOTOR BRACKET - SAE "C"			
MODEL NUMBER	PART NUMBER	SHAFT ROTATION	SHAFT POSITION
GP300H-T	31.006.0	STANDARD (RH - CW)	TOP (UPPER)
GP300H-RT	31.006.10	REVERSE (LH - CCW)	TOP (UPPER)

	<b>OUTLINE ASSEMBLY</b>		
	UNLESS OTHERWISE SPECIFIED ALL DIMENSIONS ARE IN INCHES [mm]		STANDARD TOLERANCES: DECIMALS .XX ± .080 .XXX ± .015 ANGLES ± 1/2°
COPYRIGHT © DRAWING NOT TO BE REPRODUCED OR USED TO MAKE OTHER DRAWINGS OR MACHINERY DRAWN BY SMT CHECKED BY MS	SIZE B SCALE: NONE	DWG. NO. <b>31.006.xx</b>	REV. B SHEET 1 OF 1

REVISIONS				
REV.	DESCRIPTION	DATE	DWN. BY	APPRV'D.
A	REVISED PER HYD. BRACKET	06-19-2017	SMT	MS
B	REVISED TO UPDATE TIMING GEAR CVR.	10-12-2018	SMT	MS