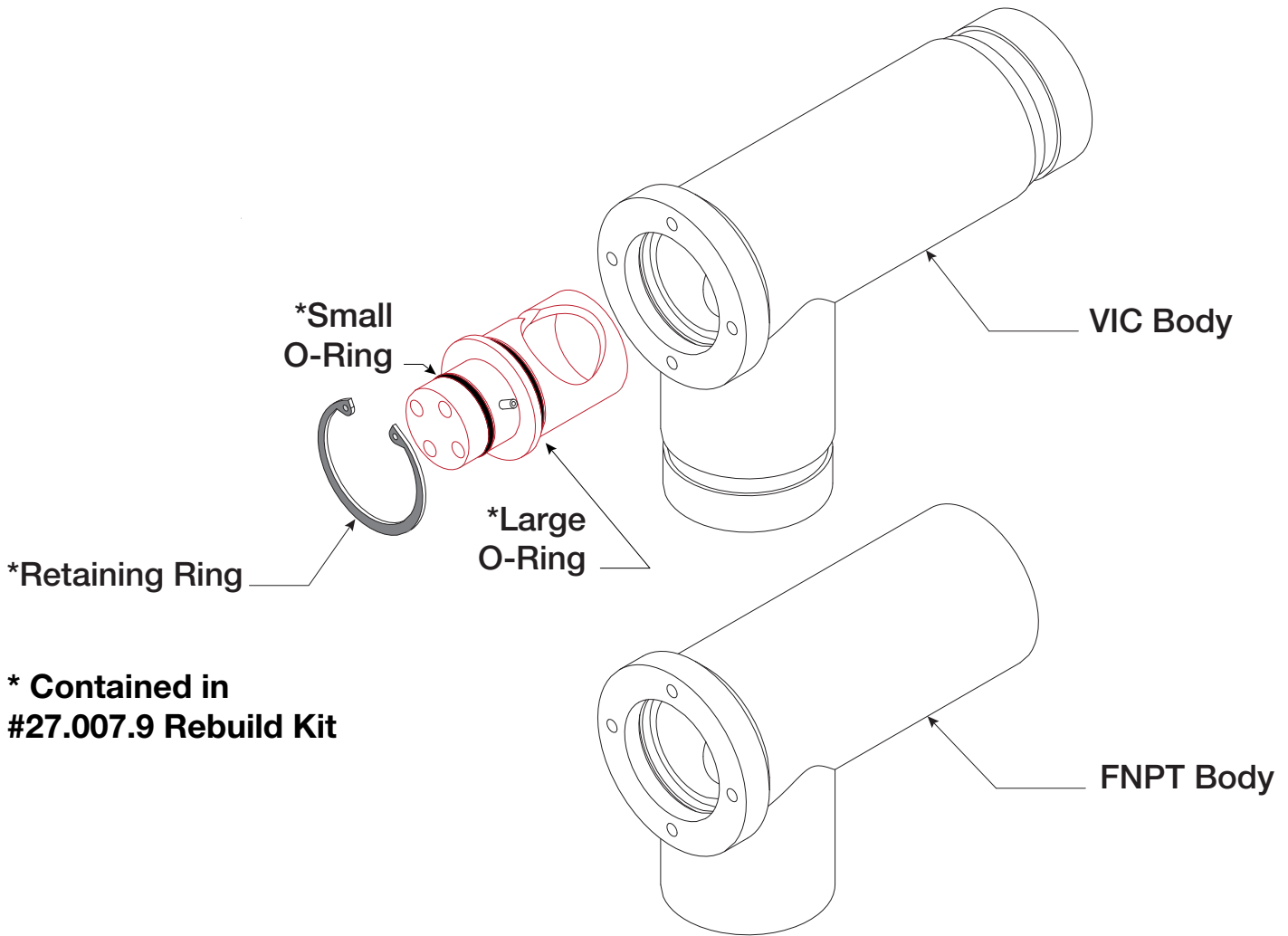


Foamate 2.0 Metering Valve O-Ring Replacement Instructions

1. Refer to the Foamate 2.0 Operation and Maintenance manual for full system details.
2. Always practice standard lock-out/tag-out procedures when doing any apparatus service.
3. O-Rings can be replaced without removing metering valve from piping.
4. Foam tank shut-off valve must be closed.
5. Place metering valve in the closed position.
6. Take note of all component mounting orientations prior to removal for proper re-assembly.
7. Remove two (2) screws from metering valve handle.
8. Remove two (2) screws from metering valve cap plate.
9. Remove cap plate.
10. Remove internal snap ring from metering valve body.
11. Pull cylinder from valve body.
12. Remove and replace both O-Rings, applying a small amount of lubricant to each O-Ring.
See sketch on **Page 2** for proper O-Ring placement.
13. Re-install cylinder, snap ring, cap plate, nameplate, and handle in proper order.
14. Check system for proper operation.

Foamate 2.1 Metering Valve O-Ring Replacement Instructions

1. Refer to Foamate 2.1 Operation and Maintenance manual for full system details.
2. Always practice standard lock-out/tag-out procedures when doing any apparatus service.
3. O-Rings can be replaced without removing metering valve from piping.
4. Foam tank shut-off valve must be closed.
5. Place metering valve in the closed position.
6. Take note of all component mounting orientations prior to removal for proper re-assembly.
7. Remove two (2) screws from metering valve handle.
8. Remove four (4) screws from metering valve flow indicator outer mounting plate.
9. Remove four (4) screws from inner mounting plate/end cap.
10. Remove internal snap ring from metering valve body.
11. Pull cylinder from valve body.
12. Remove and replace both O-Rings, applying a small amount of lubricant to each O-Ring.
See sketch on **Page 2** for proper O-Ring placement.
13. Re-install cylinder, snap ring, mounting plate/end cap, nameplates, and handle in proper order.
14. Check system for proper operation.



*** Contained in
#27.007.9 Rebuild Kit**