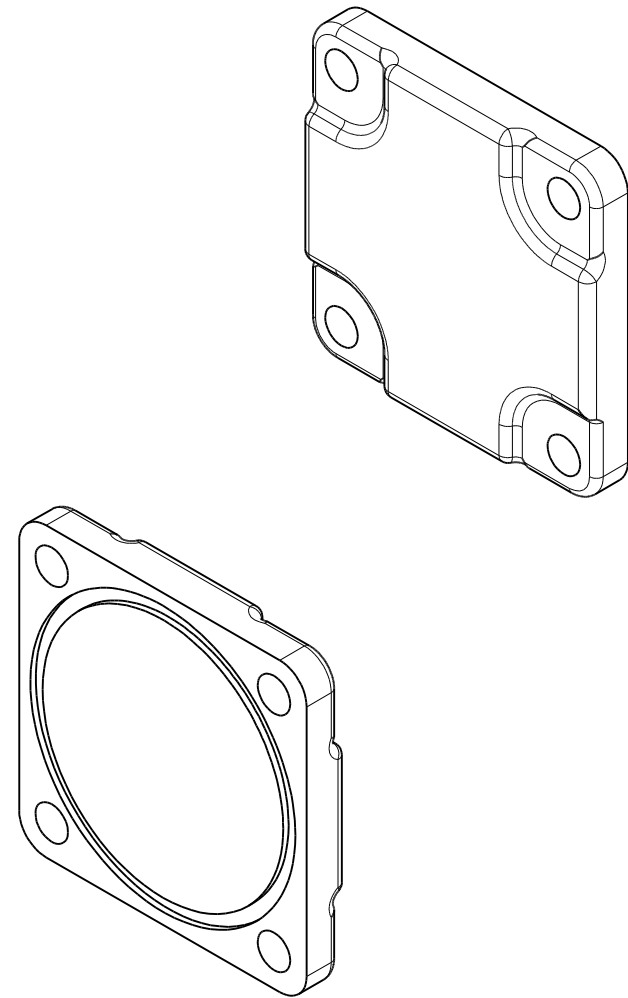
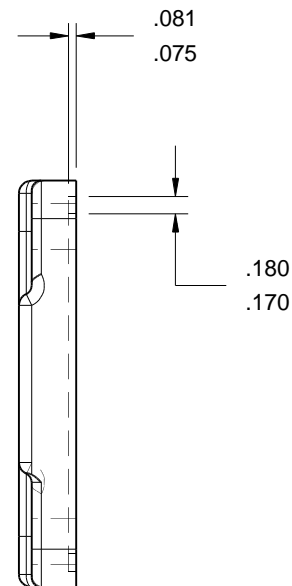
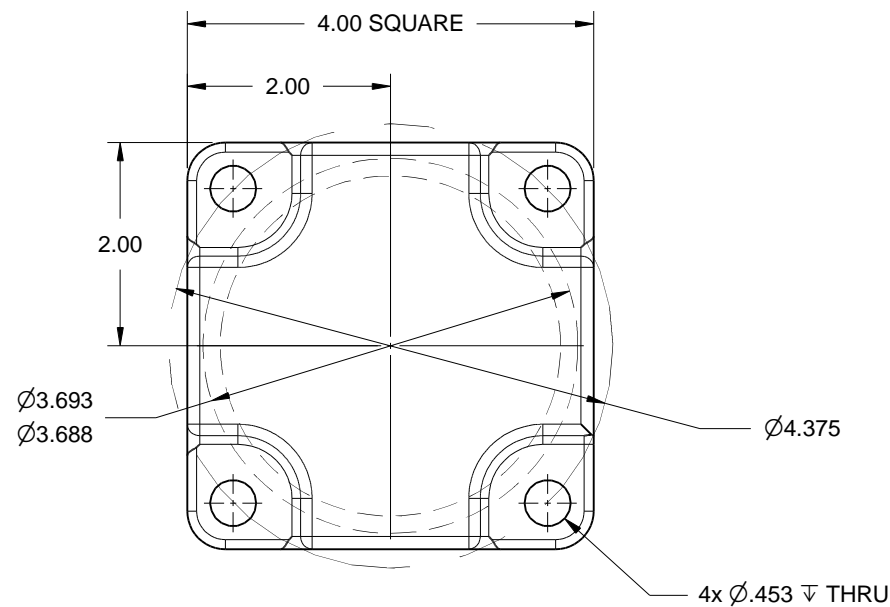
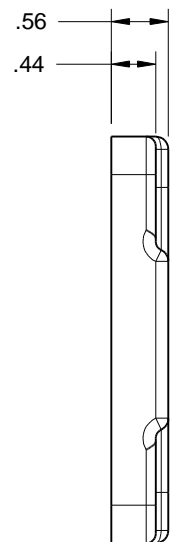


NOTES:

- 1. MATERIAL - ALUMINUM
- 2. HARD COAT ANODIZE

REVISIONS				
ZONE	REV	DESCRIPTION	DATE	APPROVED



Volume = 8.1 in³
 Mass = 0.36 kg
 Surface Area = 40.2 in²

REMOVE ALL SHARP EDGES ALL DIMENSIONS ARE INCHES STANDARD TOLERANCES: .XX +/- .015 .XXX +/- .005 ANGLES +/- .5°	DRAWN	DATE	TRIDENT EMERGENCY PRODUCTS, LLC <i>"Tomorrow's Ideas Delivered Today"</i>			
	MS	09/10/2013				
COPYRIGHT © DRAWING NOT TO BE REPRODUCED OR USED TO MAKE OTHER DRAWINGS OR MACHINERY	CHECKED		FLANGE, 2.5" MANIFOLD GROOVED, ALUMINUM			
	QA					
OR USED TO MAKE OTHER DRAWINGS OR MACHINERY	MFG		SIZE	FSCM NO.	DWG NO.	REV
	APPROVED		B		08.036.1PC	
			SCALE	1:2	SHEET	1 OF 1