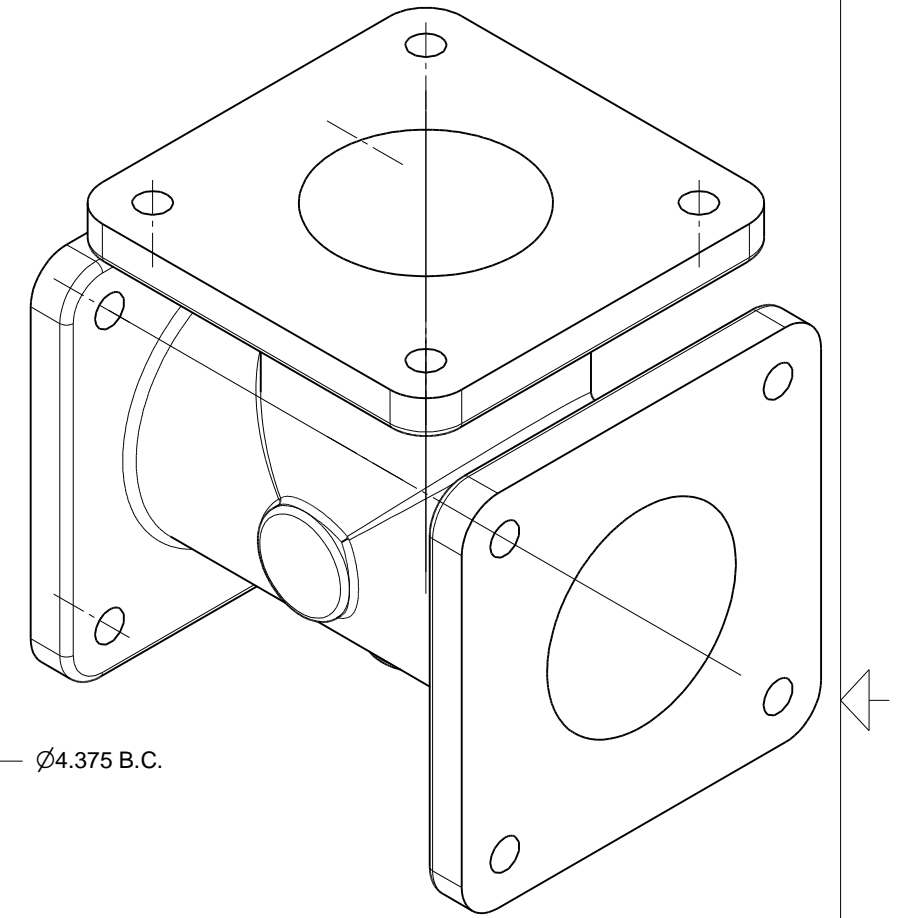
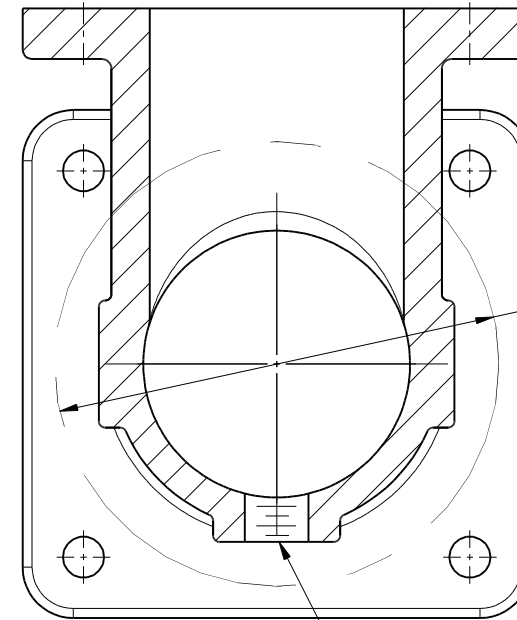
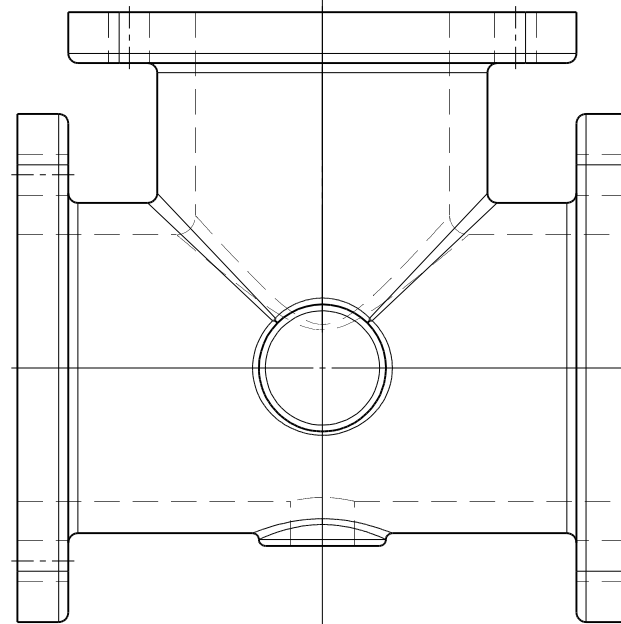
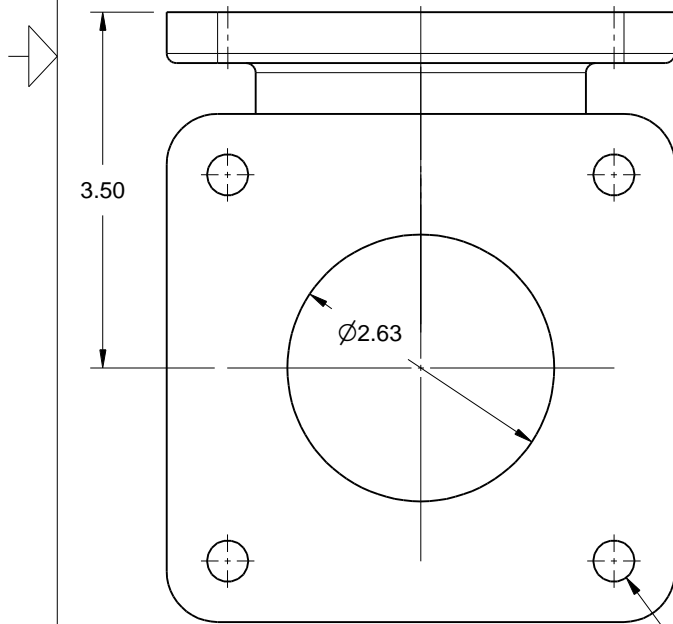
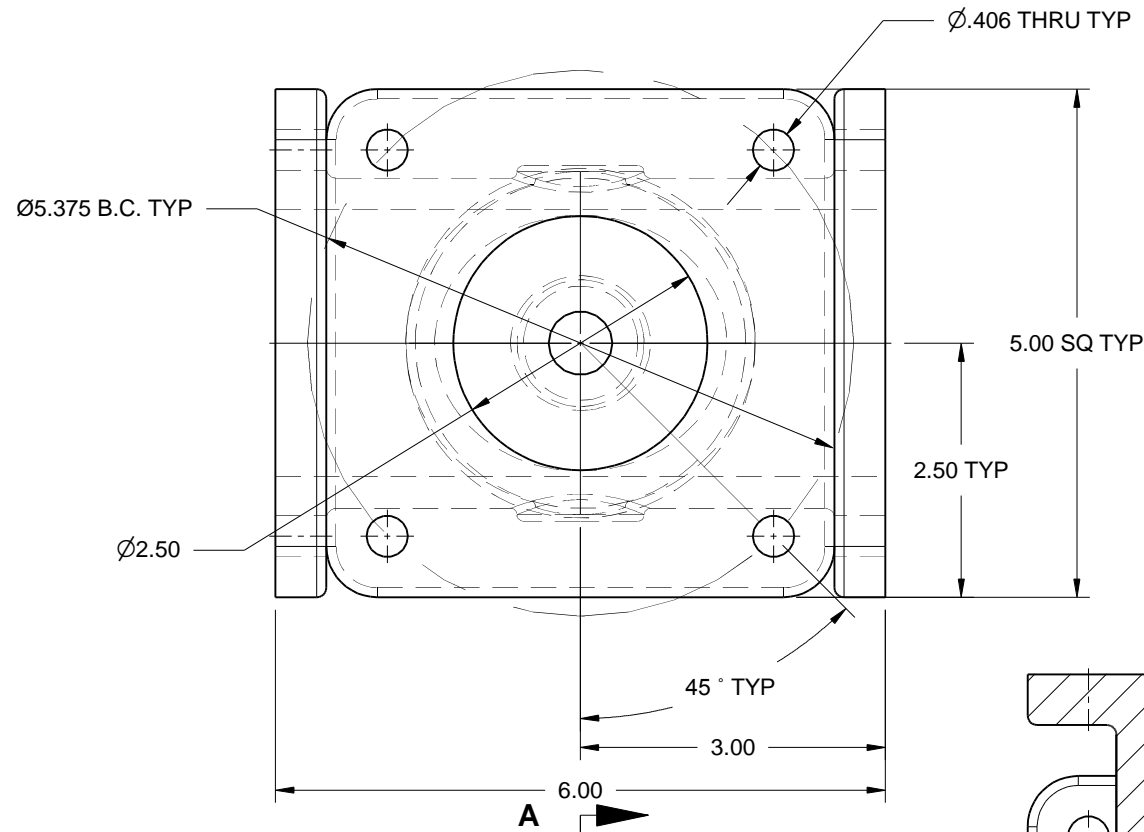


NOTES:

- 1. MATERIAL - A356-T6 ALUMINUM
- 2. HARD COAT ANODIZE

REVISIONS				
ZONE	REV	DESCRIPTION	DATE	APPROVED



Volume = 47.6 in³
 Mass = 2.11 kg
 Surface Area = 264 in²

4x Ø.406 ∇ .500

Section A-A

REMOVE ALL SHARP EDGES ALL DIMENSIONS ARE INCHES STANDARD TOLERANCES: .XX +/- .015 .XXX +/- .005 ANGLES +/- .5°		DRAWN	DATE	TRIDENT EMERGENCY PRODUCTS, LLC <i>"Tomorrow's Ideas Delivered Today"</i>	
		MS	09/10/2013		
COPYRIGHT © DRAWING NOT TO BE REPRODUCED OR USED TO MAKE OTHER DRAWINGS OR MACHINERY		CHECKED		BODY, SUCTION MANIFOLD 2.5" ALUMINUM TEE	
		QA			
		MFG		SIZE	FSCM NO.
		APPROVED		B	
				DWG NO.	REV
				07.029.0PC	
		SCALE	1:2	SHEET	1 OF 1