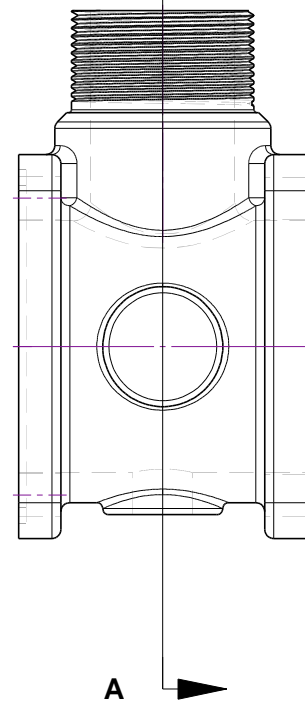
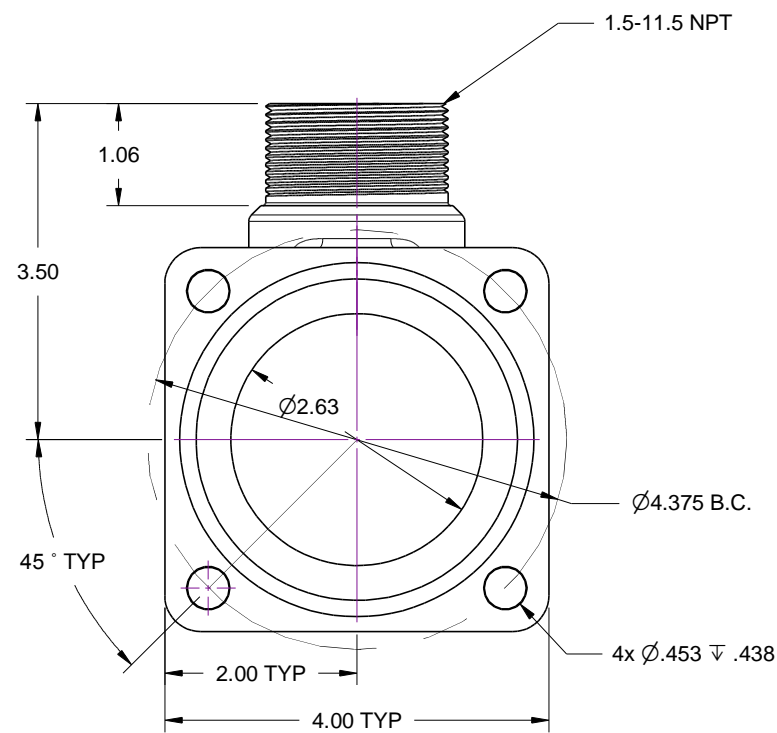
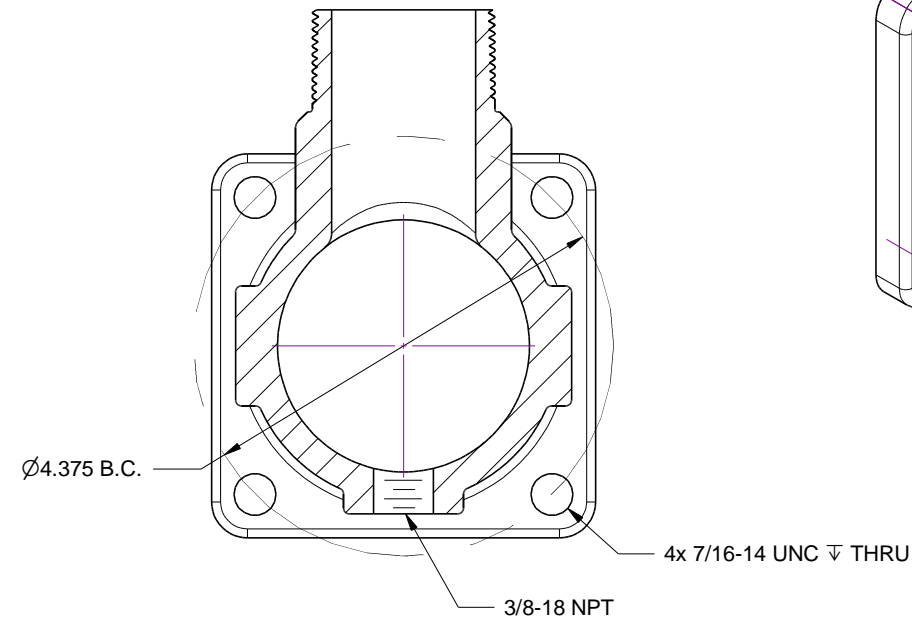
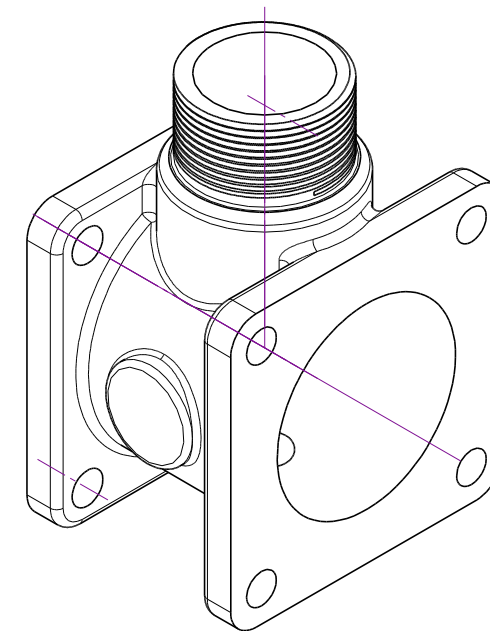
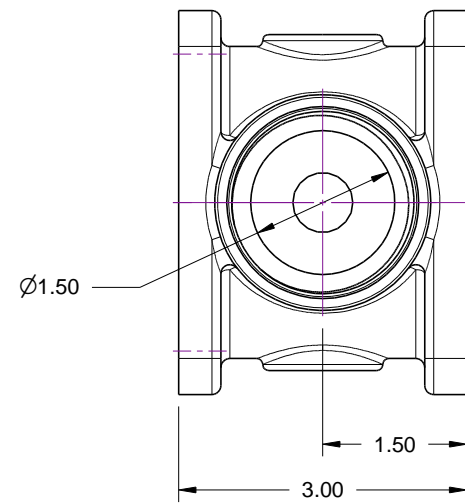


NOTES:

- 1. MATERIAL - ALUMINUM
- 2. HARD COAT ANODIZE

REVISIONS				
ZONE	REV	DESCRIPTION	DATE	APPROVED



Volume = 17.5 in³
 Mass = .78 kg
 Surface Area = 124 in²

Section A-A

REMOVE ALL SHARP EDGES ALL DIMENSIONS ARE INCHES STANDARD TOLERANCES: .XX +/- .015 .XXX +/- .005 ANGLES +/- .5°	DRAWN	DATE	TRIDENT EMERGENCY PRODUCTS, LLC <i>"Tomorrow's Ideas Delivered Today"</i>			
	MS	09/20/2013				
	CHECKED		BODY, DISCHARGE MANIFOLD 1.5" NPT ALUMINUM			
	QA					
COPYRIGHT © DRAWING NOT TO BE REPRODUCED OR USED TO MAKE OTHER DRAWINGS OR MACHINERY	MFG		SIZE	FSCM NO.	DWG NO.	REV
	APPROVED		B		07.030.15PC	
			SCALE	1:2	SHEET	1 OF 1