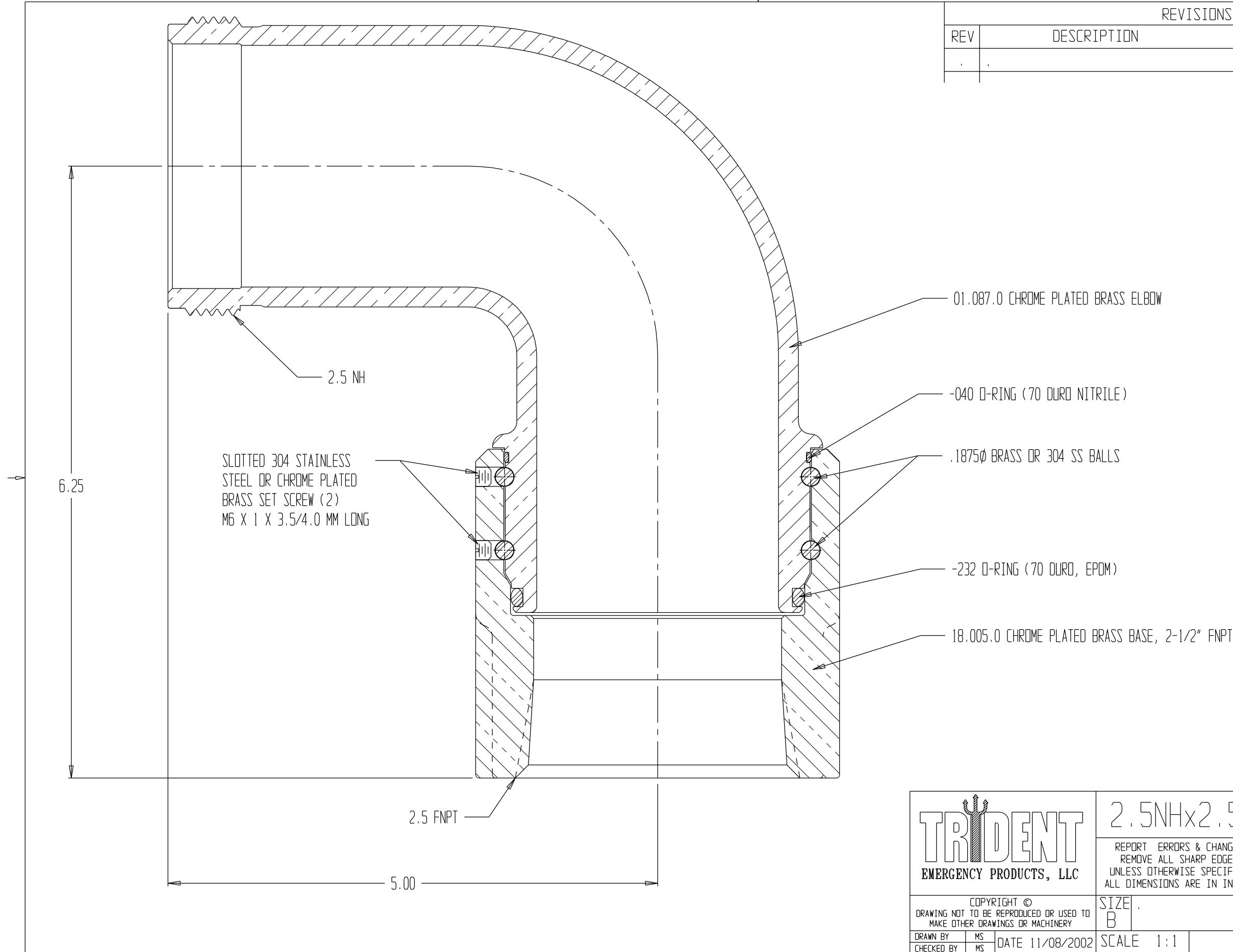


REVISIONS				
REV	DESCRIPTION	DATE	DRAWN BY	APPROVED



01.087.0 CHROME PLATED BRASS ELBOW

-040 O-RING (70 DURO NITRILE)

.1875Ø BRASS OR 304 SS BALLS

-232 O-RING (70 DURO, EPDM)

18.005.0 CHROME PLATED BRASS BASE, 2-1/2" FNPT


SLOTTED 304 STAINLESS
STEEL OR CHROME PLATED
BRASS SET SCREW (2)
M6 X 1 X 3.5/4.0 MM LONG

2.5 NH

2.5 FNPT

5.00

6.25

 EMERGENCY PRODUCTS, LLC	2.5NHx2.5FNPT SWIVEL, PLTD.		
	<small>REPORT ERRORS & CHANGES REMOVE ALL SHARP EDGES UNLESS OTHERWISE SPECIFIED ALL DIMENSIONS ARE IN INCHES</small>		<small>STANDARD TOLERANCES:</small> DECIMALS: .XX ± .030 ANGLES: ± 1/2° .XXX ± .015
<small>COPYRIGHT © DRAWING NOT TO BE REPRODUCED OR USED TO MAKE OTHER DRAWINGS OR MACHINERY</small>	SIZE: B	DWG NO.: 01.086.0	REV:
<small>DRAWN BY: MS CHECKED BY: MS</small>	DATE: 11/08/2002	SCALE: 1:1	SHEET: 1 OF 1