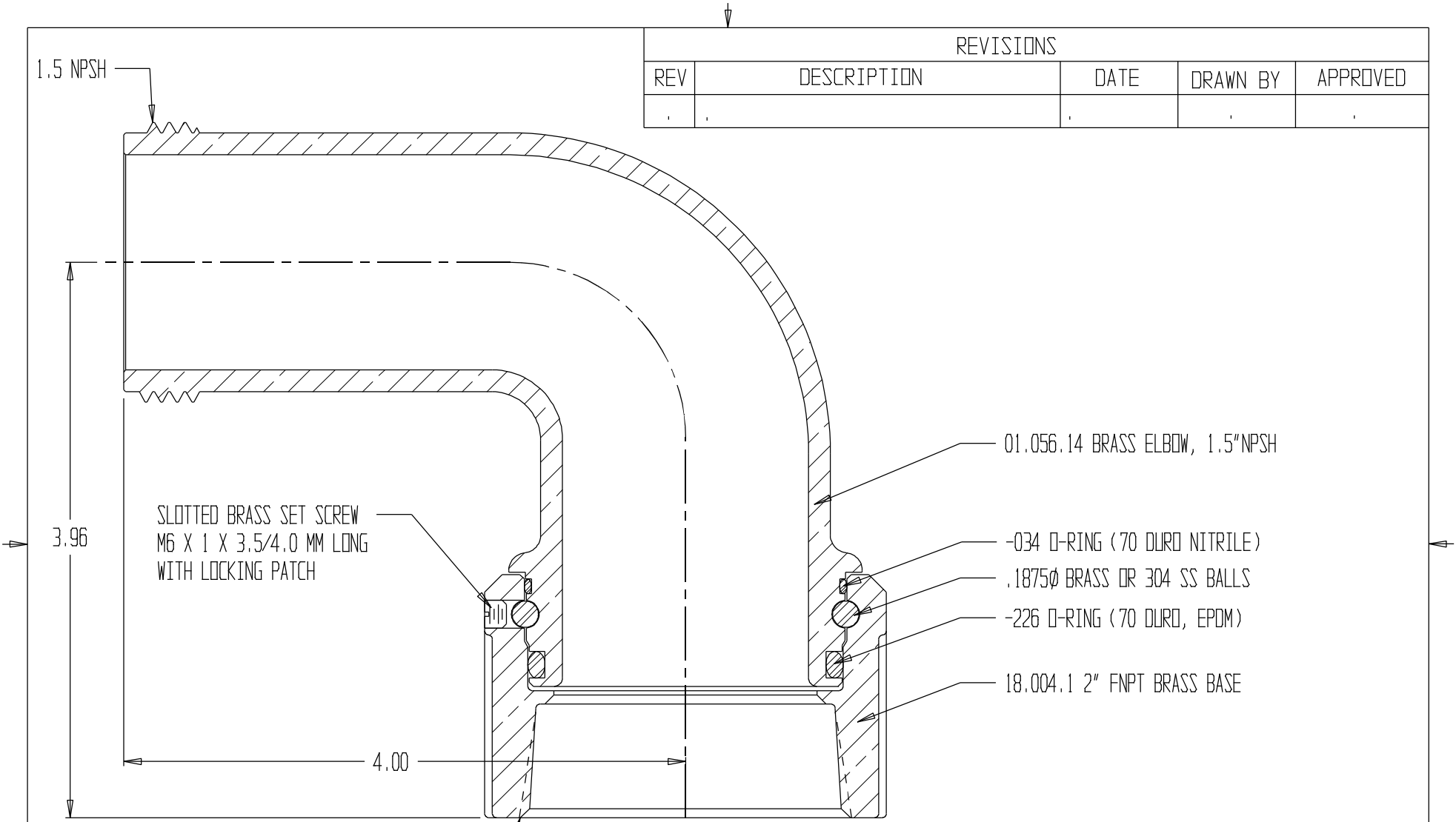


REVISIONS				
REV	DESCRIPTION	DATE	DRAWN BY	APPROVED



NOTES:

- LUBRICATE O-RINGS LIGHTLY WITH SILICONE O-RING LUBRICANT OIL PARKER SUPER-O-LUBE OR EQUIV.



1.5NPSHx2"NPT TALL BRS. ELBOW

REPORT ERRORS & CHANGES
REMOVE ALL SHARP EDGES
UNLESS OTHERWISE SPECIFIED
ALL DIMENSIONS ARE IN INCHES

STANDARD TOLERANCES:

DECIMALS	ANGLES
.XX ± .030	± 1/2°
.XXX ± .015	

COPYRIGHT © DRAWING NOT TO BE REPRODUCED OR USED TO MAKE OTHER DRAWINGS OR MACHINERY		SIZE A	DWG NO.	01.055.16	REV
DRAWN BY MS	CHECKED BY MS	DATE 01/13/2004	SCALE 1:1	SHEET 1 OF 1	