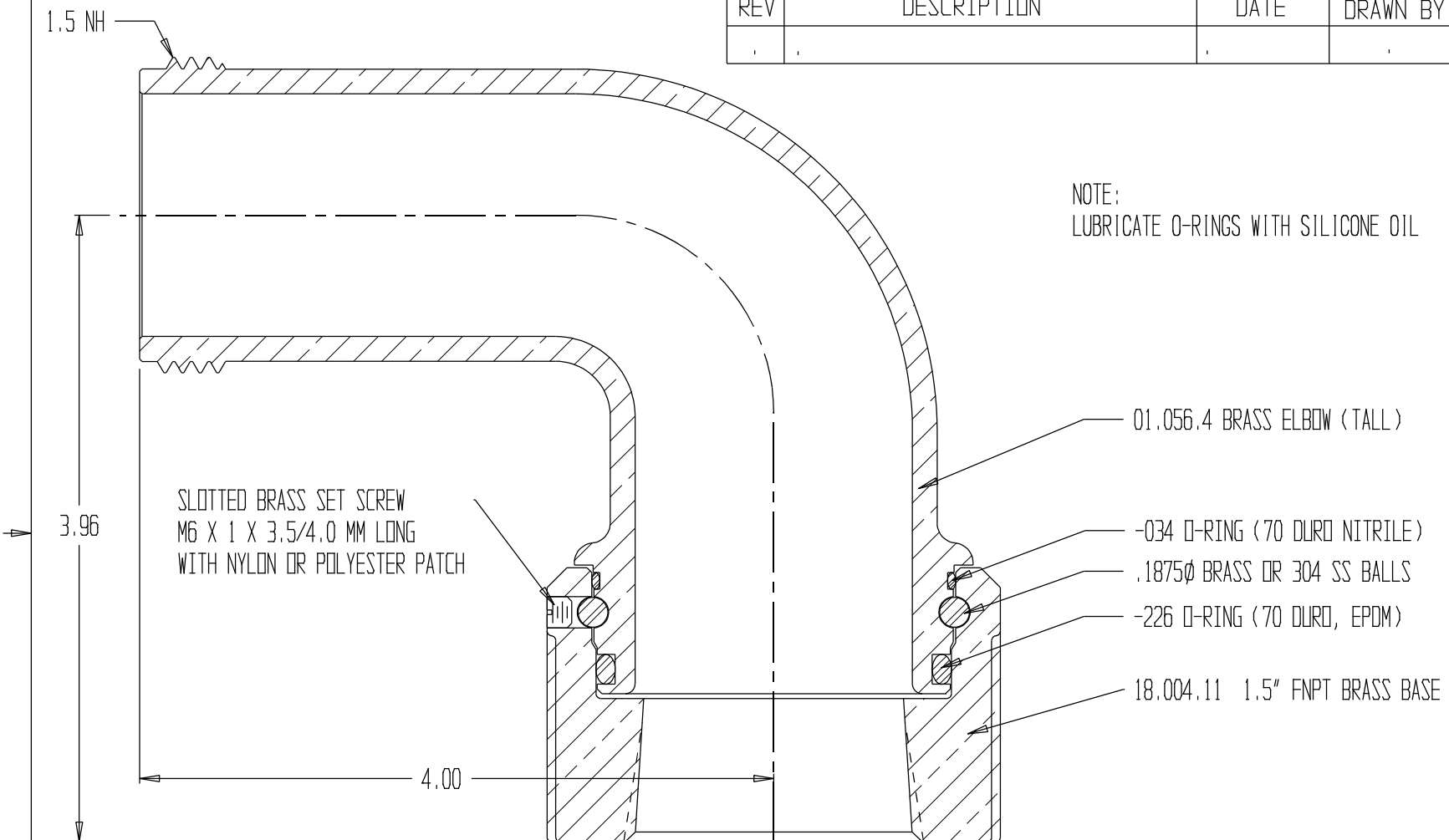


REVISIONS				
REV	DESCRIPTION	DATE	DRAWN BY	APPROVED



NOTE:
LUBRICATE O-RINGS WITH SILICONE OIL

- 01.056.4 BRASS ELBOW (TALL)
- 034 O-RING (70 DURO NITRILE)
- .1875Ø BRASS OR 304 SS BALLS
- 226 O-RING (70 DURO, EPDM)
- 18.004.11 1.5" FNPT BRASS BASE

SLOTTED BRASS SET SCREW
M6 X 1 X 3.5/4.0 MM LONG
WITH NYLON OR POLYESTER PATCH



1.5NH X 1.5" NPT TALL BRS. ELBOW

REPORT ERRORS & CHANGES
REMOVE ALL SHARP EDGES
UNLESS OTHERWISE SPECIFIED
ALL DIMENSIONS ARE IN INCHES

STANDARD TOLERANCES:

DECIMALS	ANGLES
.XX ± .030	± 1/2°
.XXX ± .015	

COPYRIGHT © DRAWING NOT TO BE REPRODUCED OR USED TO MAKE OTHER DRAWINGS OR MACHINERY		SIZE A	DWG NO.	01.055.18	REV
DRAWN BY	MS	DATE	12/02/2003	SCALE	1:1
CHECKED BY	MS			SHEET	1 OF 1