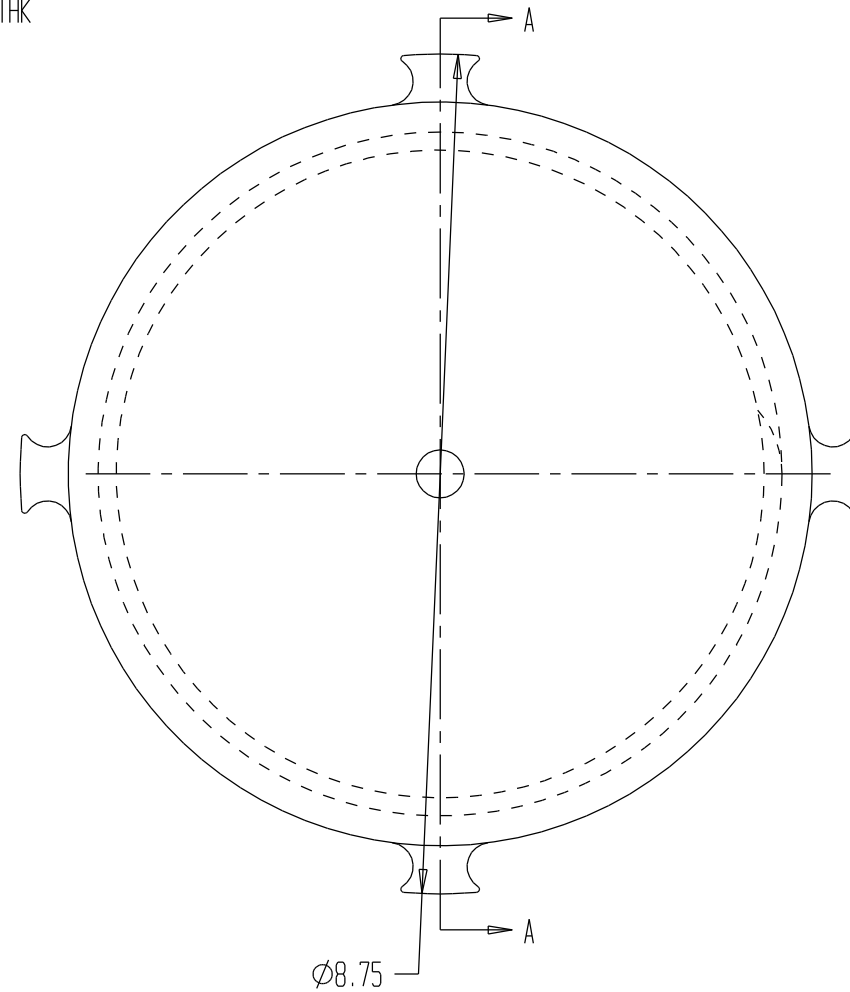
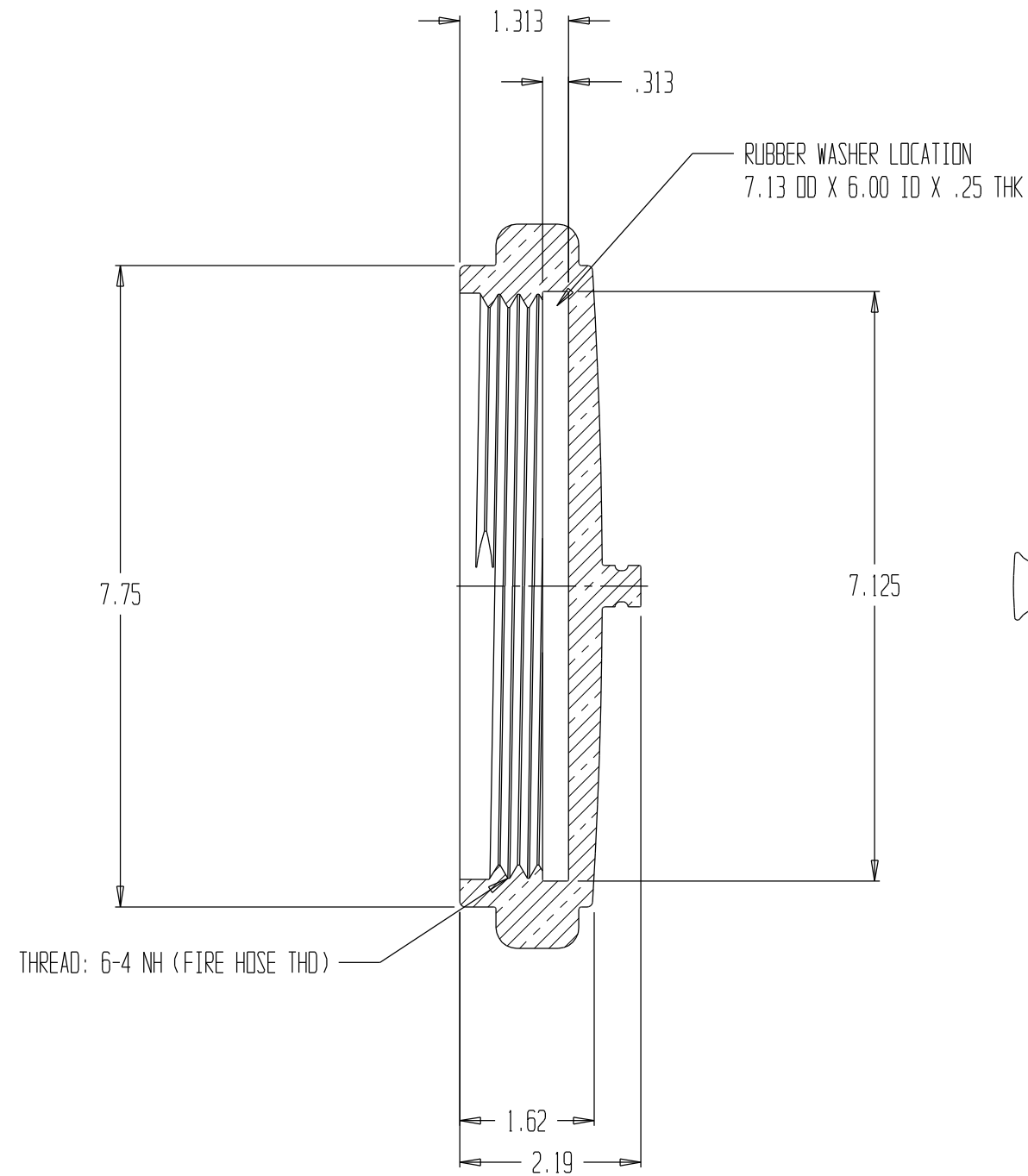


REVISIONS				
REV	DESCRIPTION	DATE	DRAWN BY	APPROVED



- NOTES:
1. MATERIAL - BRASS
 2. BLUFF AND POLISH ALL EXTERNAL SURFACES TO A MIRROR FINISH
 3. CHROME PLATE ALL SURFACES PER TRIDENT SPECIFICATION 99.003.0
 4. MIN HYDROSTATIC TEST PRESSURE: 600 PSI



CAP, 6" NH, ROCKER LUGS

REPORT ERRORS & CHANGES
REMOVE ALL SHARP EDGES
UNLESS OTHERWISE SPECIFIED
ALL DIMENSIONS ARE IN INCHES

STANDARD TOLERANCES:

DECIMALS	ANGLES
.XX ± .030	± 1/2°
.XXX ± .015	

COPYRIGHT © DRAWING NOT TO BE REPRODUCED OR USED TO MAKE OTHER DRAWINGS OR MACHINERY		SIZE B	DWG NO.	01.003.16PC	REV
DRAWN BY MS	CHECKED BY MS	DATE 06/05/2002	SCALE 1:2	SHEET 1 OF 1	