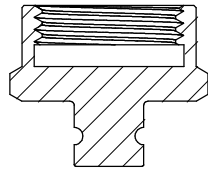


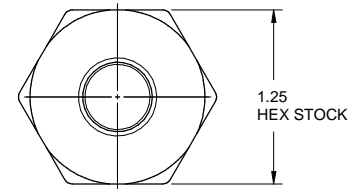
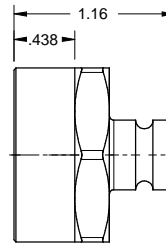
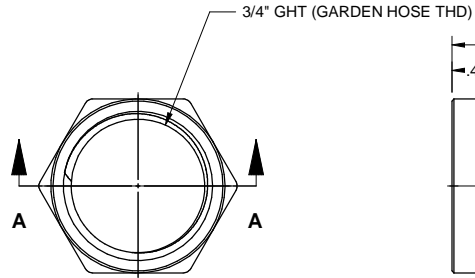
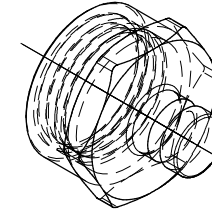
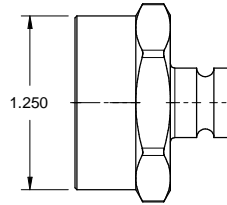
NOTES:

1. MATERIAL - BRASS ALLOY
2. CHROME PLATED
3. CRIMP S-HOOK/WIRE ROPE ASSY 05.005.0 TO 01.140.2 CAP (NOT SHOWN FOR CLARITY)

REVISIONS				
ZONE	REV	DESCRIPTION	DATE	APPROVED



Section A-A



REMOVE ALL SHARP EDGES ALL DIMENSIONS ARE INCHES STANDARD TOLERANCES: .XX +/- .015 .XXX +/- .005 ANGLES +/- .5°	DRAWN MS	DATE 04/30/2010	TRIDENT EMERGENCY PRODUCTS, LLC <i>"Tomorrow's Ideas Delivered Today"</i>		
	CHECKED		CAP, .75 IN GHT, CP, WITH WIRE ROPE ASSEMBLY		
	QA		SIZE A	FSCM NO.	DWG NO. 01.140.0PC
COPYRIGHT © DRAWING NOT TO BE REPRODUCED OR USED TO MAKE OTHER DRAWINGS OR MACHINERY	MFG	APPROVED	SCALE 1:1	SHEET 1:1	