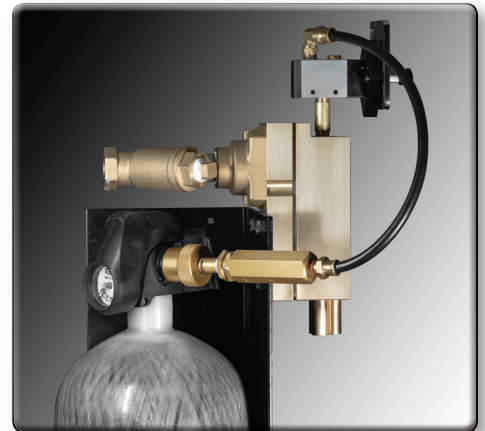


No Air Brakes... **No Problem!** Introducing AirPrime for Wildland Trucks



An Innovative Way To Prime Small Pumps

Now the proven Trident AirPrime™ Fire Pump Primer can be used on Wildland Trucks and slide in skid units that are NFPA 1906 Compliant.

Used in conjunction with a standard SCBA (Self Contained Breathing Apparatus) cylinder which supplies the air to the pre-set, non-adjustable regulator, pump priming is now both simplified and more efficient.

A simple push of the button will create a vacuum in the suction hose and fire pump replacing the air with water to prime the pump.

A full SCBA cylinder will be capable of numerous pump primes. Refer to the list on Page 2 for the estimated number of primes expected out of each of the various cylinder sizes available today. The primer can be used with cylinders ranging from 2200 PSI through 5500 PSI.

Trident recommends that the cylinder pressure be checked during routine vehicle checks. If the residual pressure is at 500 PSI or below, it is recommended that it be replaced with a full cylinder.

The cylinder valve should always be closed when the primer is not in use. Only cylinders with current hydrostatic test dates should be utilized with this system.





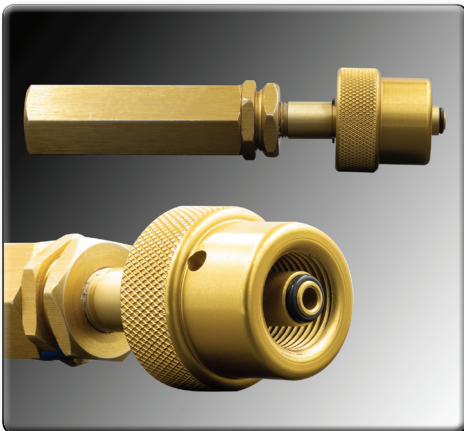
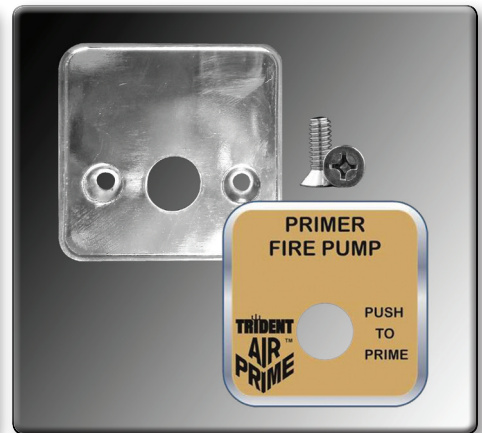
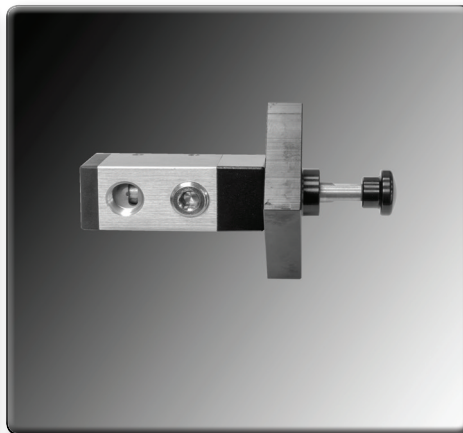
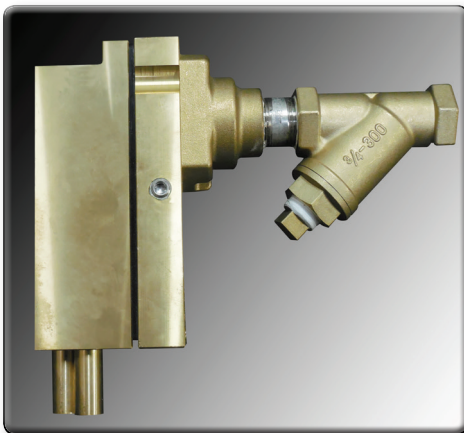
AirPrime™ Self Contained AirPrime for Wildland Trucks

Part #: 31.001.50

Included Items:

The items pictured below are included in the kit.

Installer supplied items include the SCBA cylinder, commercially available bracket (NFPA Compliant) to secure cylinder, low pressure fittings and air tubing, pipe fittings from primer control valve to the primer, provisions for mounting the primer in a vertical position as shown, control bracket/panel mount, vacuum rated tubing and fittings connecting the primer to the fire pump and the hardware required for installation.



Operation

Open SCBA Cylinder Valve. Cylinder should have a minimum residual pressure of 500 PSI. Deploy suction hose to water source, start pump and depress the **Push To Prime** button.

When finished, close the cylinder valve and check gauge for adequate pressure. If the cylinder is low, exchange with a full cylinder.

Item List

- Primer with Wye Strainer
- Push Button Control Valve
- Panel Placard with Mounting Screws and Label
- Pre-set and Non-Adjustable Regulator that attaches to cylinder outlet



Do Not Use The Regulator As A Grab Handle

It is connected to an aluminum valve on a high pressure air storage cylinder.

If Broken It May Result In Serious Injury Or Death.

Average primes listed below are based on using a 20' length of 3" hard suction hose, at a 10' lift while operating at sea level. A 3/4" vacuum hose from the primer to the pump suction port was used for this test.

Number of primes shown may vary due to your actual field conditions.

Average Primes Per Full Cylinder				
Cylinder Pressure / Duration in Minutes				
2216 PSI / 30 Min	3000 PSI / 30 Min	4500 PSI / 30 Min	4500 PSI / 45 Min	5500 PSI / 30 Min
35	50	75	90	90