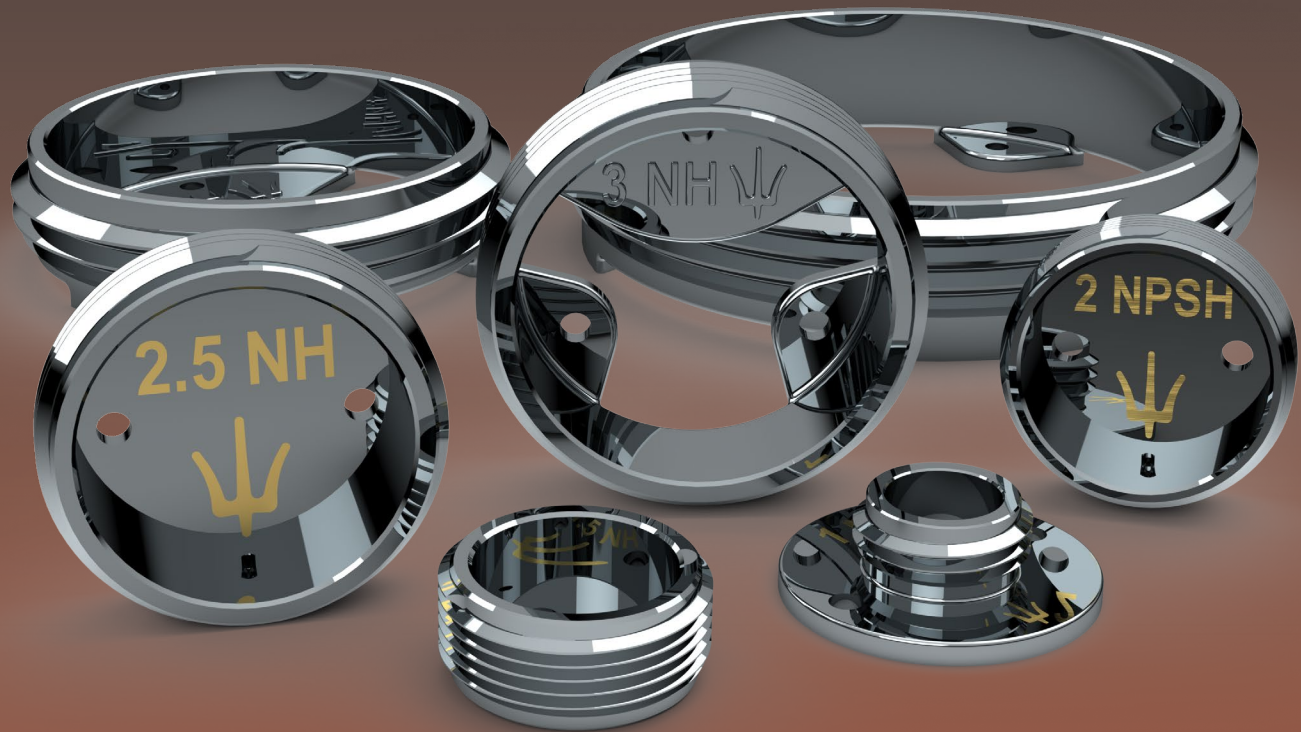




## Threaded Mounting Plates



Trident threaded mounting plates provide flexibility and efficiency while maximizing storage space for securing wyes, nozzles, reducers, and adapters.

### Product Features

- Corrosion-resistant chrome plated brass
- Mounting holes integrated to provide maximized installation flexibility
- Laser-etched size and thread type identification, 3"-6" sizes include cast identification
- Available in multiple sizes
- Available in NH and NPSH threads
- \* Special threads available upon request

[WWW.TRIDENTDIRECT.COM](http://WWW.TRIDENTDIRECT.COM)

## Part Numbers and Descriptions

Trident Part Number	Description of Item
24.034.2	1.0" NH Tool Mount, Chrome Plated Brass
24.034.10	1.0" NPSH Tool Mount, Chrome Plated Brass
24.034.3	1.5" NH Tool Mount, Chrome Plated Brass
24.034.11	1.5" NPSH Tool Mount, Chrome Plated Brass
24.034.12	2.0" NPSH Tool Mount, Chrome Plated Brass
24.034.4	2.5" NH Tool Mount, Chrome Plated Brass
24.034.5	3.0" NH Tool Mount, Chrome Plated Brass
24.034.6	4.0" NH Tool Mount, Chrome Plated Brass
24.034.7	4.5" NH Tool Mount, Chrome Plated Brass
24.034.8	5.0" NH Tool Mount, Chrome Plated Brass
24.034.9	6.0" NH Tool Mount, Chrome Plated Brass

### TRIDENT EMERGENCY PRODUCTS, LLC

*World Class Fire Industry Products*

2950 Turnpike Drive, Unit #21  
Hatboro, PA 19040

#### Contact us for Support

Phone 215-593-0700 | Fax 215-293-0701

Email [sales@tridentdirect.com](mailto:sales@tridentdirect.com)



[WWW.TRIDENTDIRECT.COM](http://WWW.TRIDENTDIRECT.COM)